

# CORNER AT WESCOTT, PHASE II

9500 Dorchester Road, North Charleston, SC 29485  
Dorchester County



## HIGHLIGHTS

For Sale/Lease  
County: Dorchester  
Type: Development

## CONTACT

Evan Staley  
404.926.1533  
estaley@hendonproperties.com

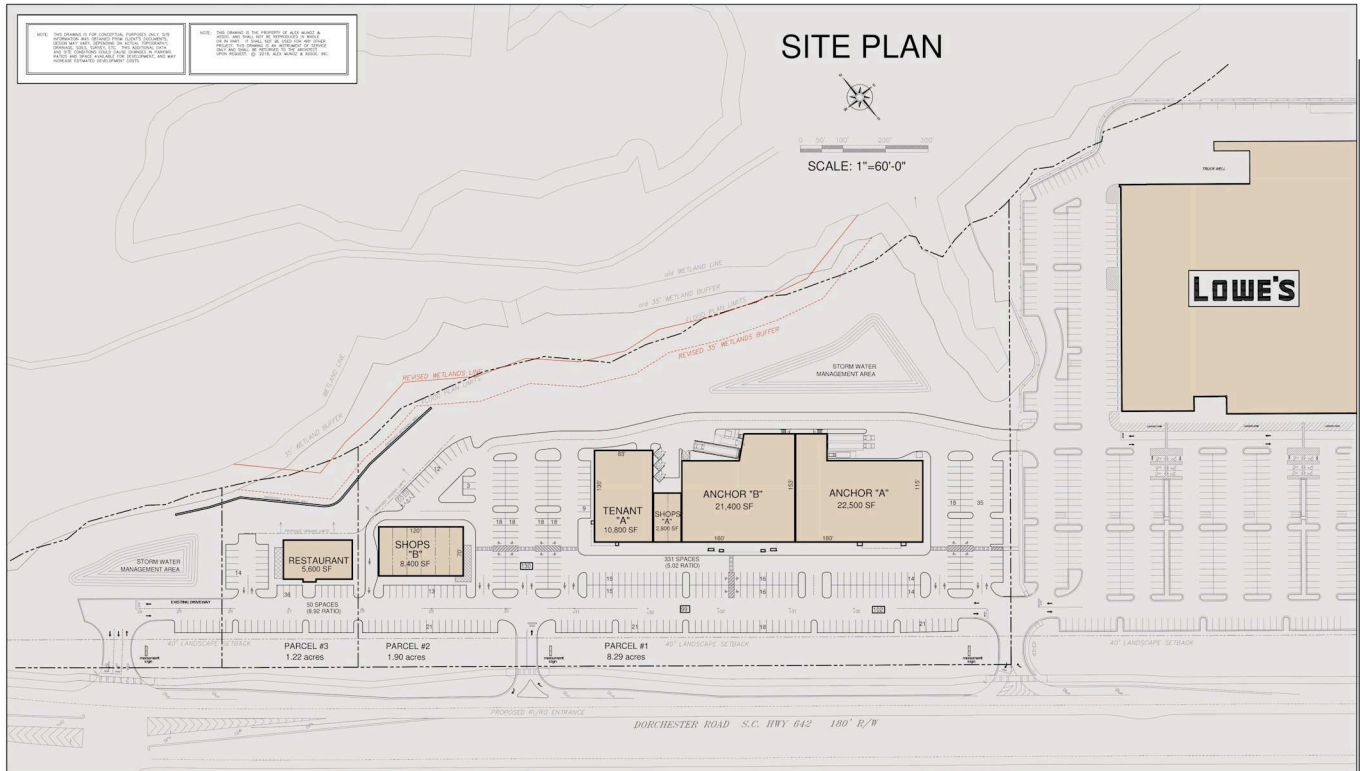
- Across from the Corner at Wescott shopping center is approximately 13 acres of undeveloped property located adjacent to Lowe's Home Improvement. The property can accommodate retail tenants and is also conducive to office suites or public storage. The property has an internal road connecting it to Wescott Boulevard with its full access intersection.
- Adjacent to Corner at Wescott, a 140,000 square foot community shopping destination located at the intersection of Dorchester Road and Wescott Boulevard in North Charleston, South Carolina. Opened in January 2014, the center is anchored by Harris Teeter and Marshalls. The center has attracted many national retailers including Starbucks Coffee, Panera Bread, Mattress Firm, Five Guys Burger and Fries, Moe's Southwest Grill, Rack Room Shoes, Great Clips, Jersey Mike's Subs, and CATO Fashions.
- Well-positioned in the heart of residential growth, this area is supported by an increasing employee base from The Boeing Company plant near Charleston International Airport.

## DEMOGRAPHICS

	3 MILES	5 MILES	7 MILES
Population	54,513	120,022	215,428
Daytime Population	12,409	32,709	69,793
Households	20,721	46,917	84,139
Average Household Income (\$)	103,555	101,220	97,603
Median Household Income (\$)	83,401	77,858	75,644
Median Age	36	36	36

# CORNER AT WESCOTT, PHASE II

9500 Dorchester Road, North Charleston, SC 29485  
Dorchester County



## CORNER AT WESCOTT SHOPPING CENTER WESTERN PARCEL

*Alex Muñoz*  
ALEX MUÑOZ & ASSOCIATES, INC.  
ARCHITECTURE: 412 KING PAULS TERRY ROAD  
ARCHITECT DESIGN: JACQUES BEAUFORT 30306  
PLANNING: (843) 878-8168

DORCHESTER ROAD  
CHARLESTON, SOUTH CAROLINA  
A HENDON PROPERTIES SHOPPING VILLAGE

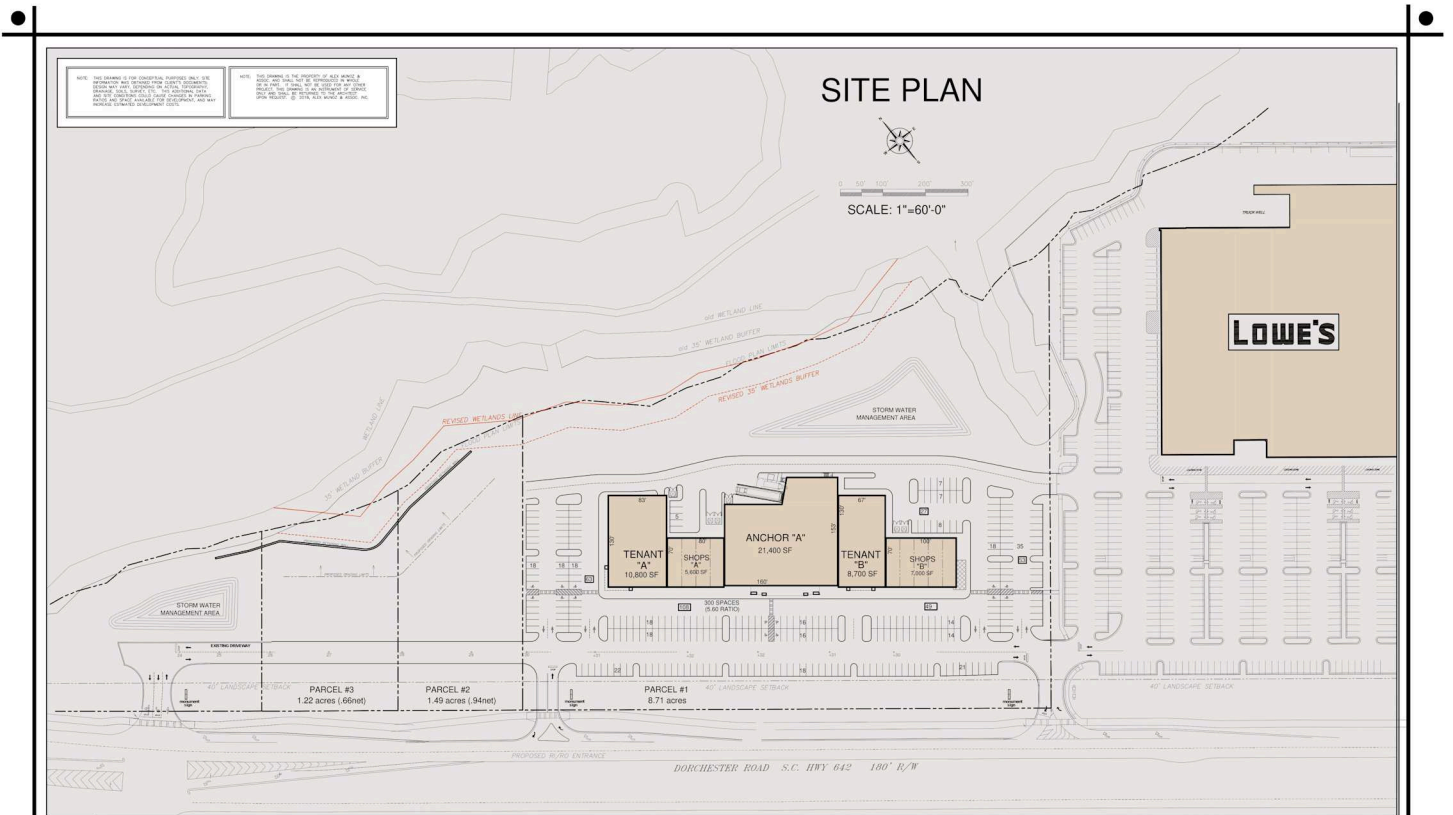


AUGUST 30, 2018

SK-23

# CORNER AT WESCOTT, PHASE II

9500 Dorchester Road, North Charleston, SC 29485  
Dorchester County



## CORNER AT WESCOTT SHOPPING CENTER WESTERN PARCEL

DORCHESTER ROAD  
CHARLESTON, SOUTH CAROLINA  
A HENDON PROPERTIES SHOPPING VILLAGE



OCTOBER 18, 2018

SK-24

ALEX MUÑOZ & ASSOCIATES, Inc.

ARCHITECT  
INTERIOR DESIGN  
PLANNING

465 EAST FIFTH STREET, SUITE 2000  
ATLANTA, GEORGIA 30308  
(404) 525-8100