

CORNER AT WESCOTT, PHASE II

9500 Dorchester Road, North Charleston, SC 29485
Dorchester County



HIGHLIGHTS

For Sale/Lease
County: Dorchester
Type: Development

CONTACT

Evan Staley
404.926.1533
estaley@hendonproperties.com

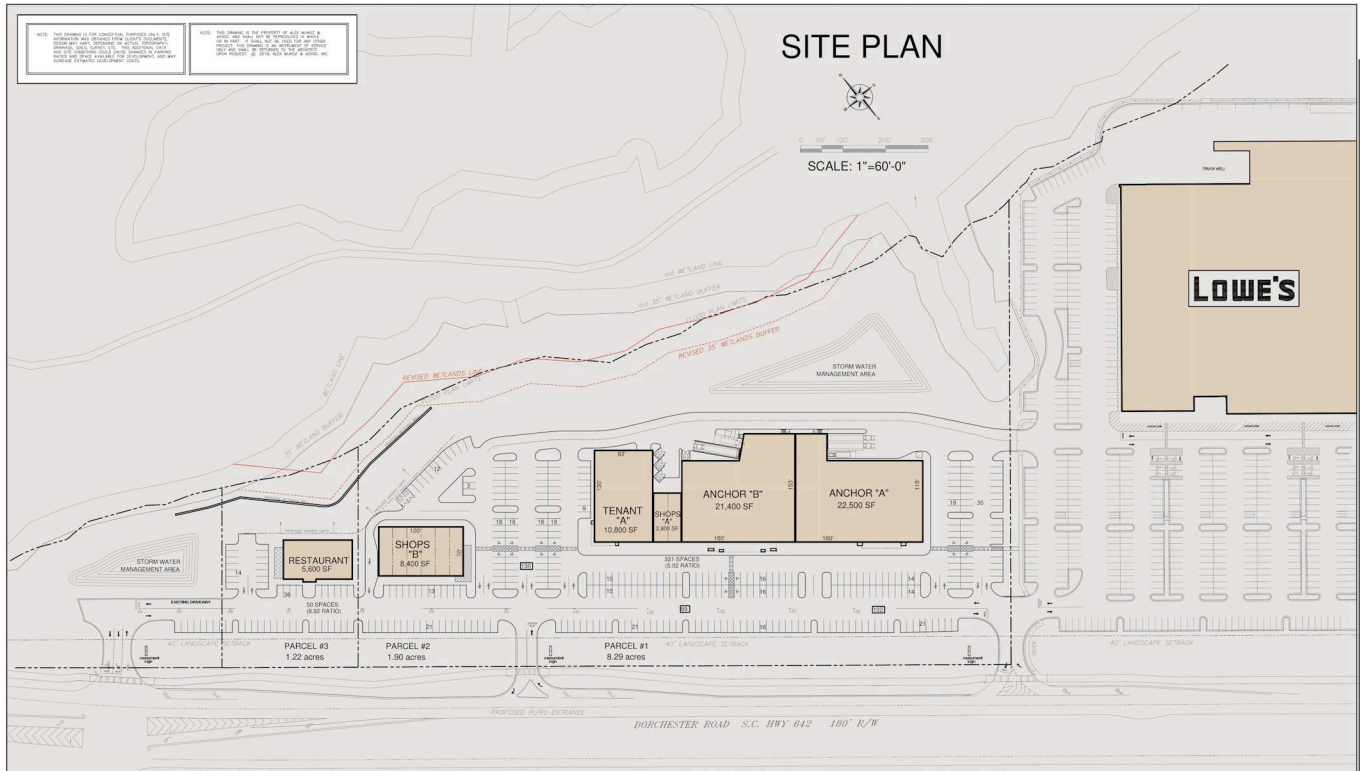
- Across from the Corner at Wescott shopping center is approximately 13 acres of undeveloped property located adjacent to Lowe's Home Improvement. The property can accommodate retail tenants and is also conducive to office suites or public storage. The property has an internal road connecting it to Wescott Boulevard with its full access intersection.
- Adjacent to Corner at Wescott, a 140,000 square foot community shopping destination located at the intersection of Dorchester Road and Wescott Boulevard in North Charleston, South Carolina. Opened in January 2014, the center is anchored by Harris Teeter and Marshalls. The center has attracted many national retailers including Starbucks Coffee, Panera Bread, Mattress Firm, Five Guys Burger and Fries, Moe's Southwest Grill, Rack Room Shoes, Great Clips, Jersey Mike's Subs, and CATO Fashions.
- Well-positioned in the heart of residential growth, this area is supported by an increasing employee base from The Boeing Company plant near Charleston International Airport.

DEMOGRAPHICS

	3 MILES	5 MILES	7 MILES
Population	51,116	106,356	198,794
Daytime Population	12,694	35,093	69,720
Households	18,773	39,695	74,469
Average Household Income (\$)	81,142	74,035	71,946
Median Household Income (\$)	67,497	60,080	57,026
Median Age	38	38	38

CORNER AT WESCOTT, PHASE II

9500 Dorchester Road, North Charleston, SC 29485
Dorchester County



CORNER AT WESCOTT SHOPPING CENTER WESTERN PARCEL

Alex Muñoz
ALEX MUÑOZ & ASSOCIATES, INC.
ARCHITECTURE: 402 KING PALMS DRIVE, SUITE 100
ARCHITECT: JENNIFER M. GIBSON, ARCHITECT
PLANNING: (843) 878-8168

DORCHESTER ROAD
CHARLESTON, SOUTH CAROLINA
A HENDON PROPERTIES SHOPPING VILLAGE

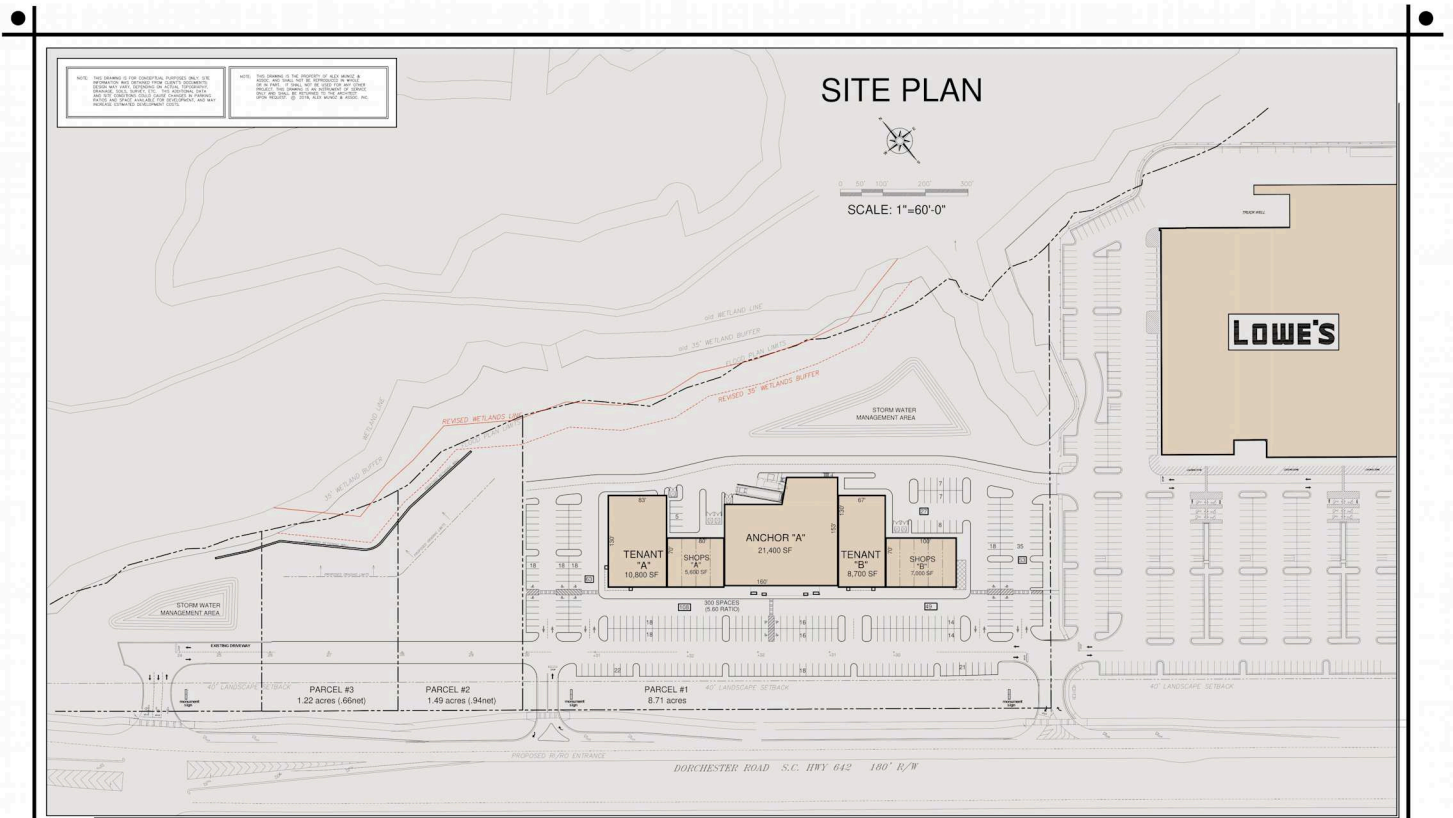


AUGUST 30, 2018

SK-23

CORNER AT WESCOTT, PHASE II

9500 Dorchester Road, North Charleston, SC 29485
Dorchester County



CORNER AT WESCOTT SHOPPING CENTER
WESTERN PARCEL

Alex Munoz
ALEX MUNOZ & ASSOCIATES, Inc.
ARCHITECTS: ALEX MUNOZ
INTERIOR DESIGN: ALEX MUNOZ
PLANNING: ALEX MUNOZ

DORCHESTER ROAD
CHARLESTON, SOUTH CAROLINA
A HENDON PROPERTIES SHOPPING VILLAGE



OCTOBER 18, 2018

SK-24