

ACWORTH

Hwy 41 and Hwy 92, Acworth, GA 30101
Cobb County



HIGHLIGHTS

For Sale/Lease
County: Cobb
Type: Commercial
Market: Atlanta MSA

One .748 acre lot available on the Cobb Parkway corridor (Highway 41 at Highway 92) in Acworth, Georgia. Within 5 miles of the site, household incomes average in excess of \$117,000. With the recent expansion of Highway 29, the traffic counts have increased from 27,000+ vehicles to 35,000+ per day.

CONTACT

Tanner Hendon
404.783.8674
thendon@hendonproperties.com

The site is less than a 5 minute drive from downtown historical Acworth. With its proximity to Allatoona Lake and Lake Acworth, this corridor attracts year-round recreational visitors and lakefront residents.

Surrounding traffic generators include WalMart, Target, Home Depot, Kohl's, and Lowe's.

DEMOGRAPHICS

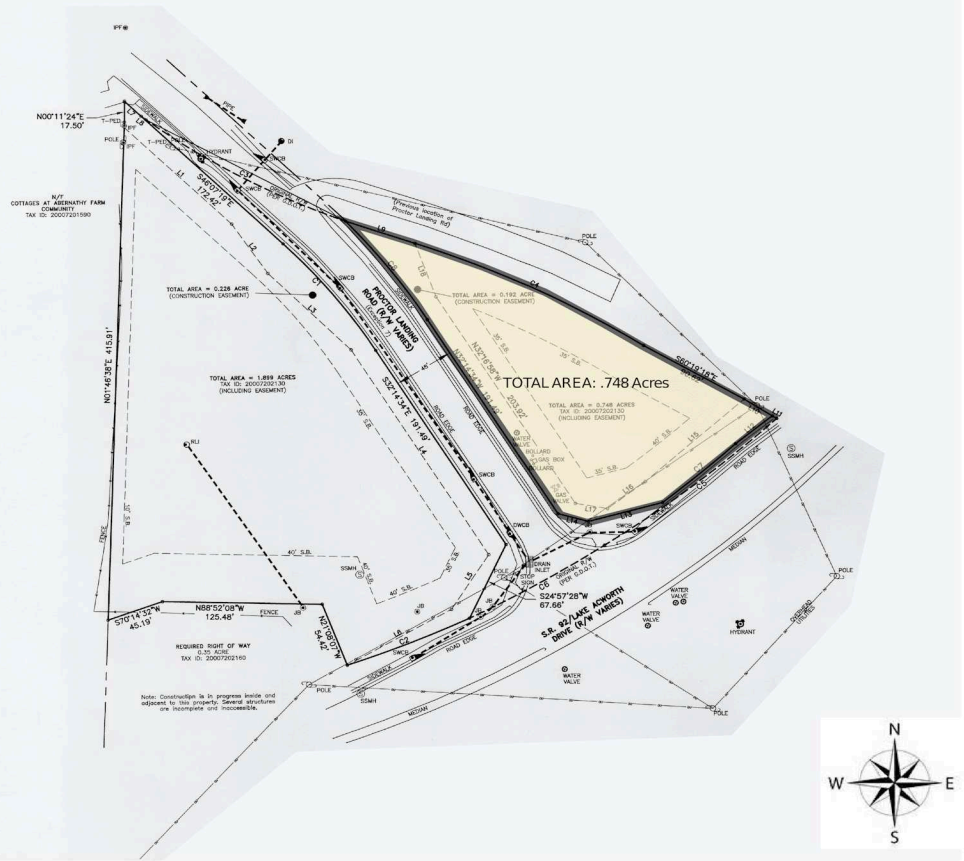
	1 MILE	3 MILES	5 MILES
Population	1,668	33,796	118,577
Daytime Population	1,511	14,345	27,509
Households	629	12,632	41,120
Average Household Income (\$)	116,294	124,572	139,794
Median Household Income (\$)	81,814	95,929	108,003
Median Age	39	39	39

ACWORTH

Hwy 41 and Hwy 92, Acworth, GA 30101
Cobb County



ACWORTH OUTPARCEL SITE PLAN



OPT Available

0.75 AC