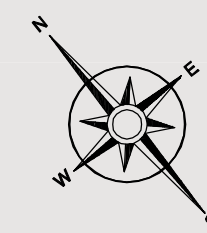


NOTE: THIS DRAWING IS FOR CONCEPTUAL PURPOSES ONLY. SITE INFORMATION WAS OBTAINED FROM CLIENT'S DOCUMENTS. DESIGN MAY VARY, DEPENDING ON ACTUAL TOPOGRAPHY, DRAINAGE, SOILS, SURVEY, ETC. THIS ADDITIONAL DATA AND SITE CONDITIONS COULD CAUSE CHANGES IN PARKING RATIOS AND SPACE AVAILABLE FOR DEVELOPMENT, AND MAY INCREASE ESTIMATED DEVELOPMENT COSTS.

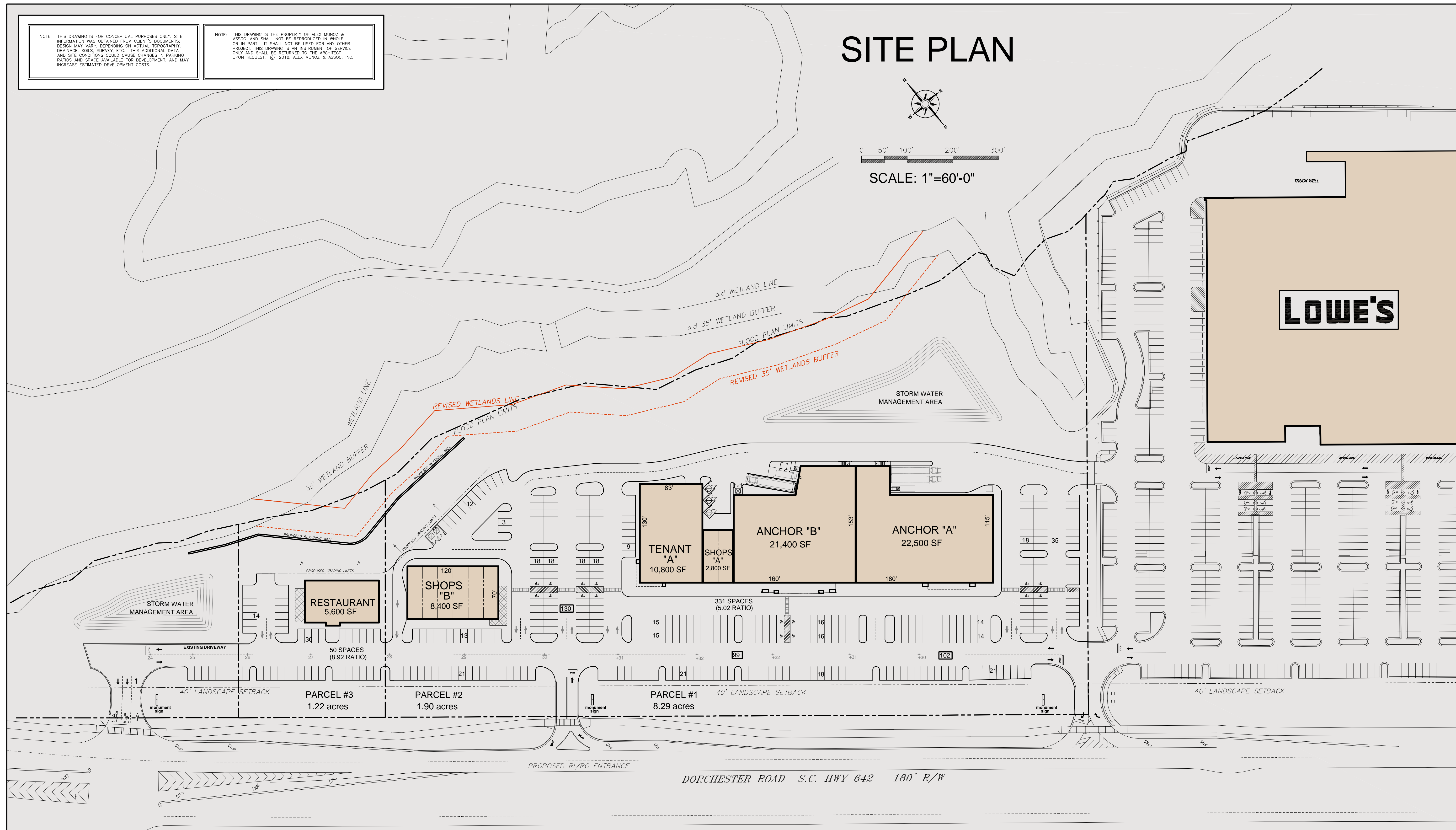
NOTE: THIS DRAWING IS THE PROPERTY OF ALEX MUÑOZ & ASSOC. AND SHALL NOT BE REPRODUCED IN WHOLE OR IN PART. IT SHALL NOT BE USED FOR ANY OTHER PROJECT. THIS DRAWING IS AN INSTRUMENT OF SERVICE ONLY AND SHALL BE RETURNED TO THE ARCHITECT UPON REQUEST. © 2018, ALEX MUÑOZ & ASSOC. INC.

SITE PLAN



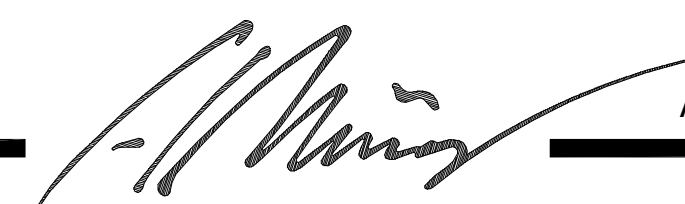
0 50' 100' 200' 300'

SCALE: 1"=60'-0"



CORNER AT WESCOTT SHOPPING CENTER WESTERN PARCEL

DORCHESTER ROAD
CHARLESTON, SOUTH CAROLINA
A HENDON PROPERTIES SHOPPING VILLAGE



ALEX MUÑOZ & ASSOCIATES, Inc.

ARCHITECTURE 452 EAST PACES FERRY ROAD
INTERIOR DESIGN ATLANTA, GEORGIA 30305
PLANNING (404) 876-8169



AUGUST 30, 2018

SK-23