

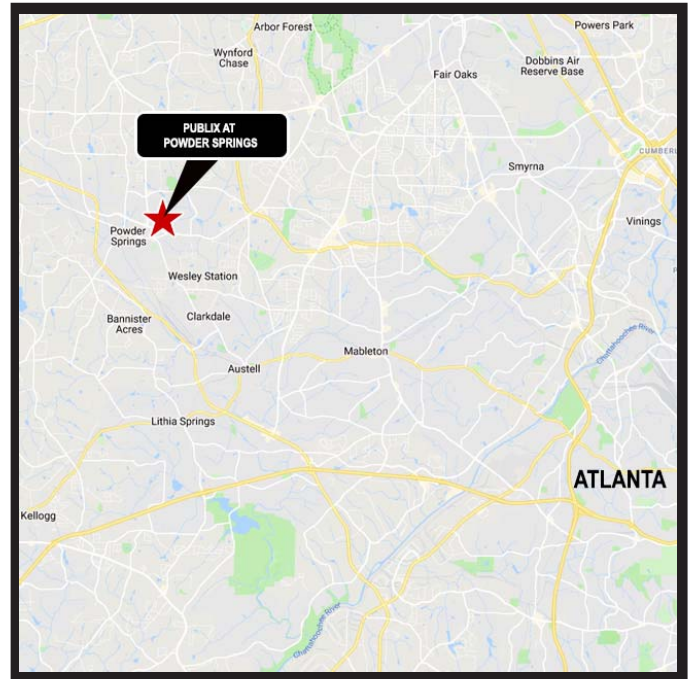
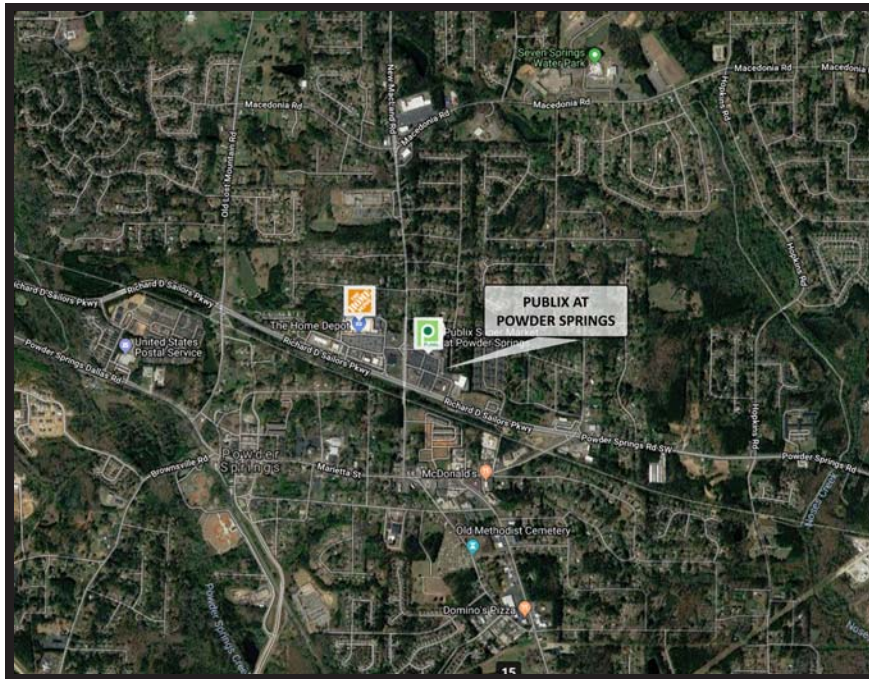
# PUBLIX AT POWDER SPRINGS

## POWDER SPRINGS, GEORGIA

3721 New Macland Road, 30127

33.90129 N / -84.66353 W

- 77,853 SF Publix Anchored Center
- High traffic corridor, with a combined traffic count of 32,000 cars per day
- Richard D. Sailors Parkway is a main commuter artery connecting Cobb and Paulding Counties
- Excellent visibility, signage and signalized access
- Strong mix of national, local and regional tenants



3445 Peachtree Road, Suite 465  
Atlanta, GA 30326  
678.919.8440 (O)  
404.307.8587 (C)

[jwammock@hendonretailservices.com](mailto:jwammock@hendonretailservices.com)

Owned and Operated by:

**NEW**  
**MARKET**

A Preferred Apartment Communities, Inc. Company

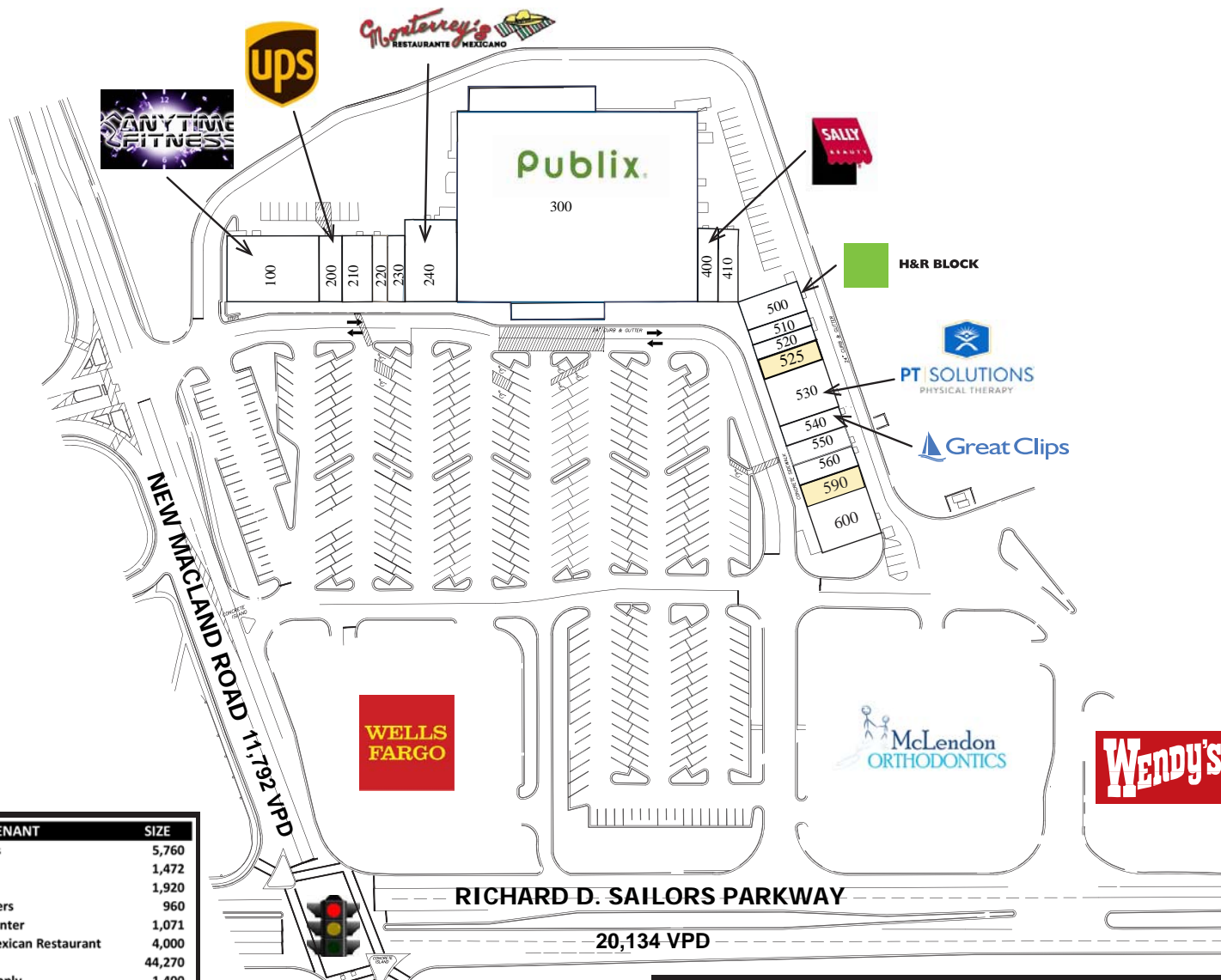
**HENDON**  
RETAIL SERVICES

# PUBLIX AT POWDER SPRINGS

## POWDER SPRINGS, GEORGIA

3721 New Macland Road, 30127

33.90129 N / -84.66353 W



SUITE	TENANT	SIZE
100	Anytime Fitness	5,760
200	The UPS Store	1,472
210	Coast Dental	1,920
220	Whitlock Kleeners	960
230	The Tutoring Center	1,071
240	Monterrey's Mexican Restaurant	4,000
300	Publix	44,270
400	Sally Beauty Supply	1,400
410	Apex Real Estate Academy	1,400
500	H&R Block	1,800
510	Dragon 168	900
520	Silver Nail & Tan	900
525	AVAILABLE	1,200
530	PT Solutions	3,000
540	Great Clips	1,200
550	GNC	1,200
560	Metro PCS	1,200
590	AVAILABLE	1,200
600	1 Stop Package	3,000
<b>TOTAL</b>		<b>77,853</b>

DEMOGRAPHICS			
	1 mile	3 miles	5 miles
Population	5,604	41,799	111,677
Avg HH Income	\$ 67,998	\$ 77,486	\$ 80,132
<b>Traffic Counts:</b>			
New Mackland Road	11,792	(VPD)	
Richard D Sailors Pkwy	20,134	(VPD)	

3445 Peachtree Road, Suite 465  
 Atlanta, GA 30326  
 678.919.8440 (O)  
 404.307.8587 (C)  
 jwammock@hendonretailservices.com

Owned and Operated by:

**NEW MARKET**

**HENDON RETAIL SERVICES**